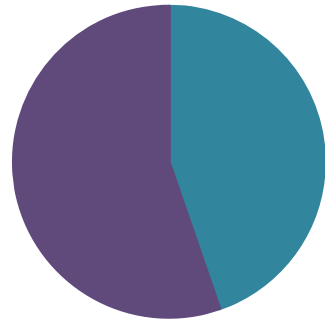


# Corporate Parenting

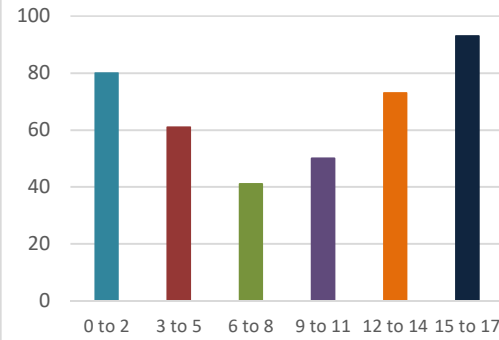
## Children in Our Care - 23rd January 2020

Gender of Children in Our Care



Female	178	45%
Male	220	55%
<b>Total CIOC</b>	<b>398</b>	

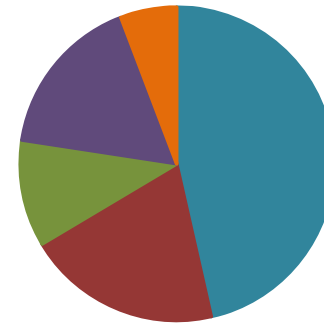
Age Profile of Children in Care



0 to 2	80	9 to 11	50
3 to 5	61	12 to 14	73
6 to 8	41	15 to 17	93

## Entering Care Jan 19 to Dec 19

Age of children entering care



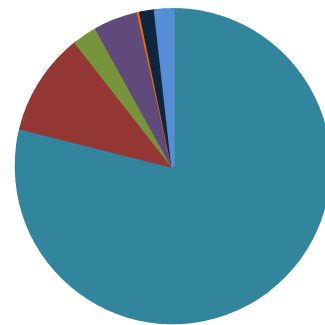
0 to 2	72 (46%)	11 to 15	26 (17%)
3 to 6	31 (20%)	16+	9 (6%)
7 to 10	17 (11%)		

## Children in Our Care since 2008

Number of Children in our care since 2008



Ethnicity of Children in Our Care

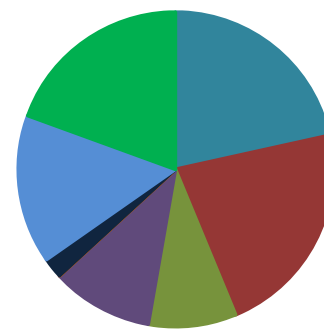


White/UK	314	79%
Asian Pakistani	42	11%
Other	10	2%
Mixed	18	5%
Black	1	0%
White Other	6	1%
Asian Other, incl Indian	7	2%

Where are children in care placed?

Foster Placements (in-house)	131
Friends & Family	66
Placed with Parents	63
Foster Placements (agency)	61
Children's Homes (agency)	27
Adoptive Placements	18
Res Accom Not Subject to CH Regs	16
Other	8
Children's Homes (in-house)	3
Prison/HMYOI	2
NHS	2
Residential School	1
Independent Living	0
Secure	0
<b># Children in Our Care with a Disability</b>	<b>22</b>
<b>% Children in Our Care with a Disability</b>	<b>6%</b>

Destinations of Care Leavers



Reached 18	31 (22%)
Returned to parents	32 (22%)
Moved in with relatives	13 (9%)
Other reason	15 (10%)
Moved into supp.accomodation	0 (0%)
Child Arrangement Order	3 (2%)
Adopted	22 (15%)
Special guardianship	28 (20%)

## Entering/Leaving Care since 2001

	Entering	Leaving	Net
Total in 2001	111	95	16
Total in 2002	103	117	-14
Total in 2003	131	134	-3
Total in 2004	102	104	-2
Total in 2005	119	100	19
Total in 2006	94	104	-10
Total in 2007	97	92	5
Total in 2008	114	104	10
Total in 2009	151	94	57
Total in 2010	112	123	-11
Total in 2011	155	128	27
Total in 2012	125	149	-24
Total in 2013	123	120	3
Total in 2014	89	125	-36
Total in 2015	163	139	24
Total in 2016	170	139	31
Total in 2017	161	143	18
Total in 2018	162	153	9
Total in 2019	155	144	11

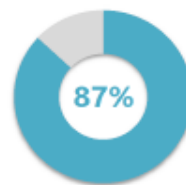
\*Please note this table is calculated by calendar years

## Health - as at 1st October 2019

261 current open CLA looked after for at least 12 months

### Health assessments

Current open CLA who have been looked after for at least 12 months with an up to date health assessment (in the last 6 months for CLA aged under 5, and in the last 12 months for CLA aged 5-plus)



### Dental checks

Current open CLA who have been looked after for at least 12 months who have had a dental check in the last 12 months.



## Performance compared with national, regional and comparator averages

	Current - BwD	Comparator Median	Regional Average	National Average
<b>Number of children in our care (CIOC) per 10,000 0-18 year old population</b>	103	98	91	64
<i>% in foster care</i>	65%	73%	69%	73%
<i>Of which - in-house provider or family and friends approved care</i>	50%			48%
<i>Of which - Other provider</i>	15%			25%
<i>% in adoption placements</i>	5%	3%	2%	3%
<i>% in residential/resi schools/secure/other residential provision</i>	12%	12%	12%	13%
<i>% placed at home with parents</i>	16%	8%	13%	6%
Placement Stability (% of CIOC with 3 placements or more in a yr)	16.0%	9%	10%	10%
Placement Stability (% of CIOC in same placement for past 2 yrs & in care for 2.5 yrs+)	62%	71%	71%	70%
% of Care Leavers aged 19-21 in touch with the LA	100%			
% of Care Leavers aged 19-21 years old in Education, Employment or Training	48%	51%	50%	51%
% of Care Leavers aged 19-21 years old in suitable accommodation	97%	88%	87%	84%
Adoption Scorecard (rolling 3 yrs) - entry into care to adoption placement (days)	457			520
Adoption Scorecard (rolling 3 yrs) - Placement Order to matching (days)	172			220
Average Caseload in Assessment and Safeguarding Teams	27.2			
Average Caseload in Children in our Care Teams	22.9			
% of children in our care aged 10-17, in care for over 12 months, who have offended*	1.8%			
Number of unaccompanied asylum seekers in care	2			

\*Comparable information as at March 2018 \*\*CIOC offending data for Q2 2019/20